

Figure 1 – Amplifier schematic

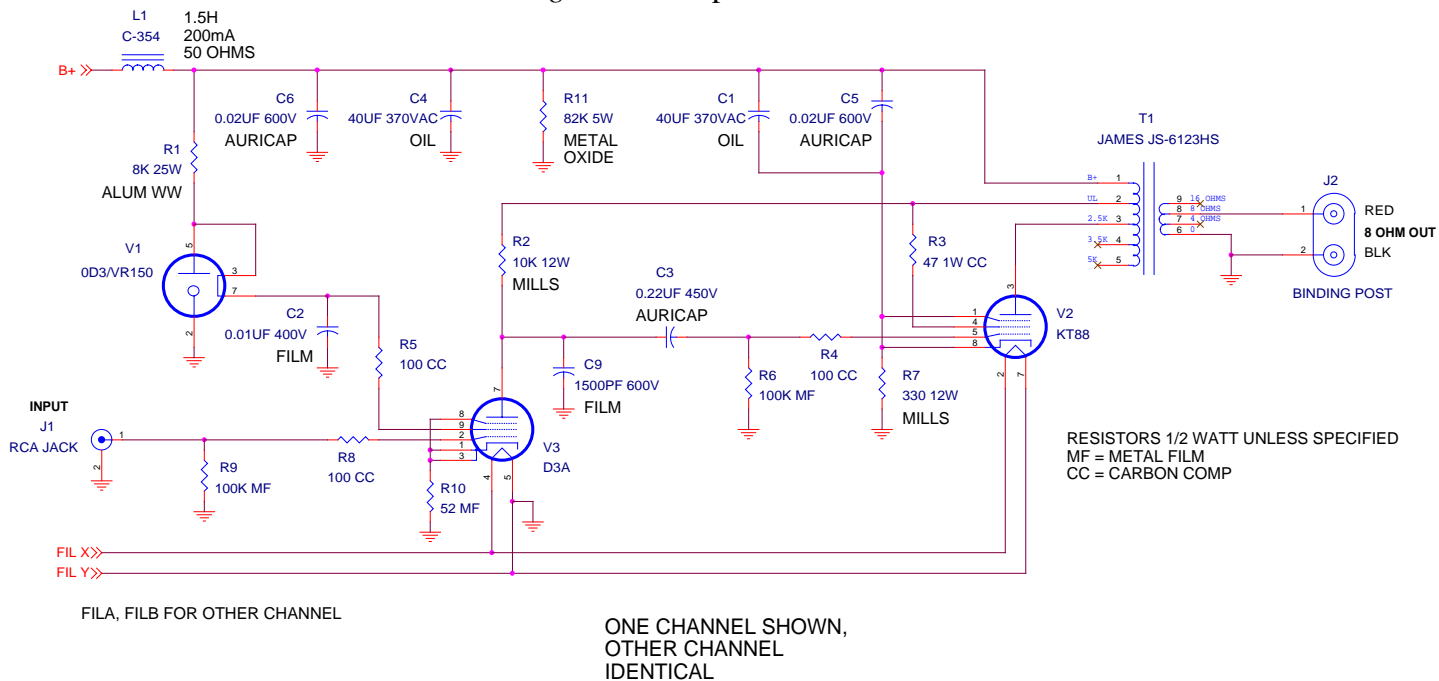


Figure 2 – Power supply schematic

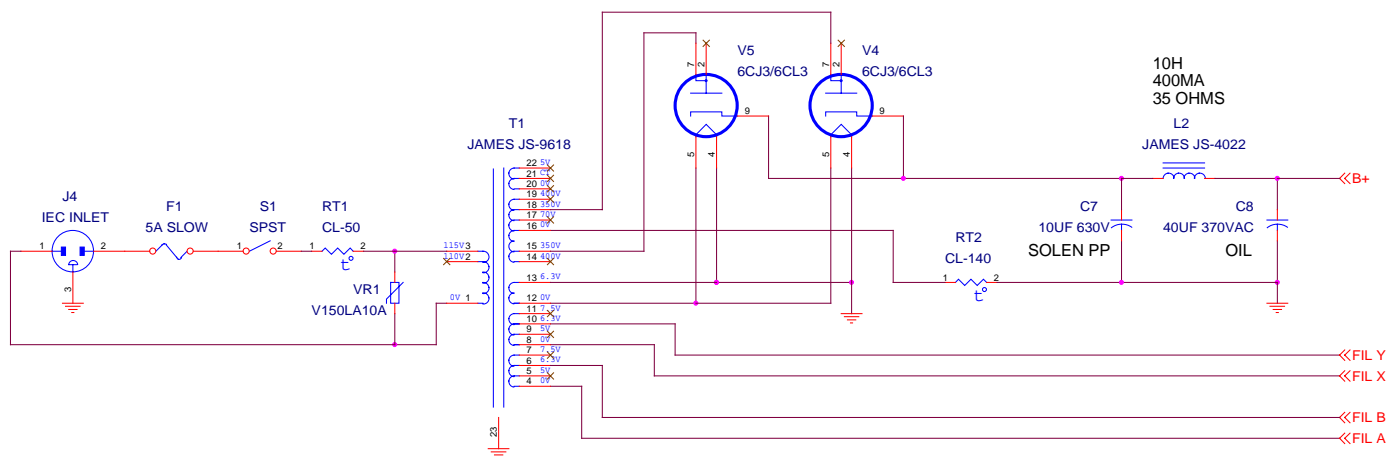
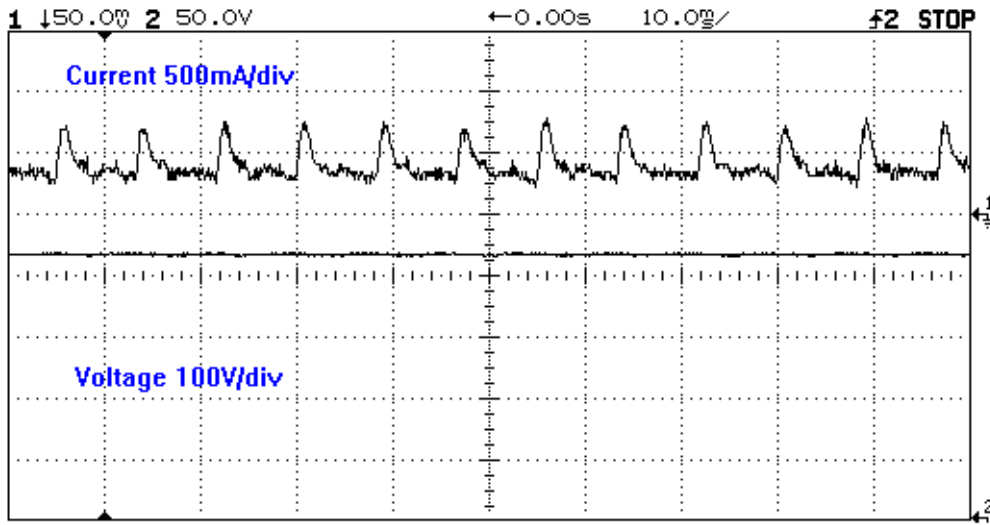
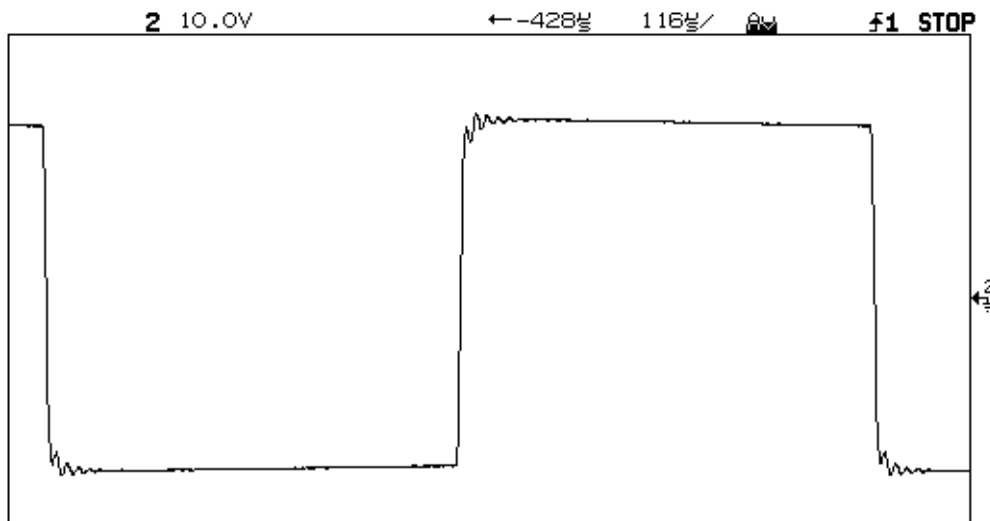


Figure 3 – Rectifier current and output voltage



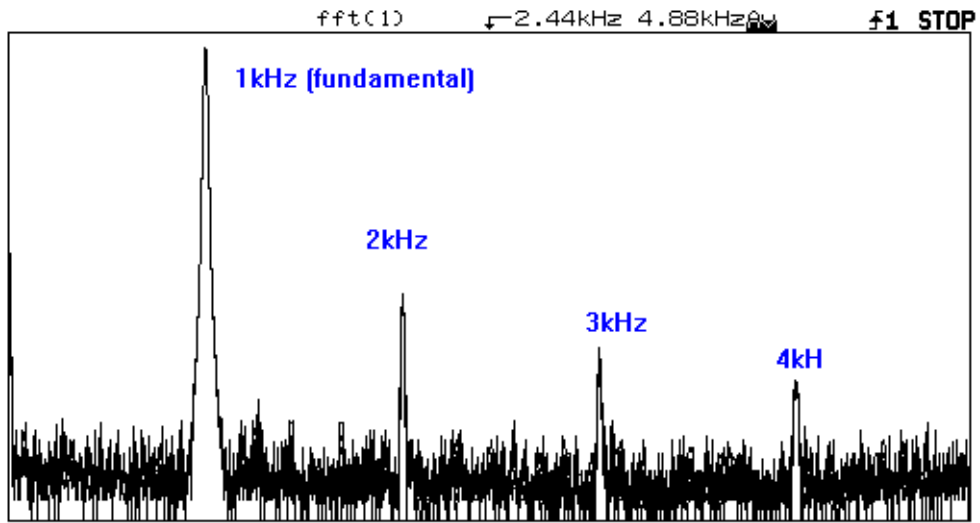
Steady-state (after startup)

Figure 4 – Square wave response (1kHz, 1 watt into 8 ohms)



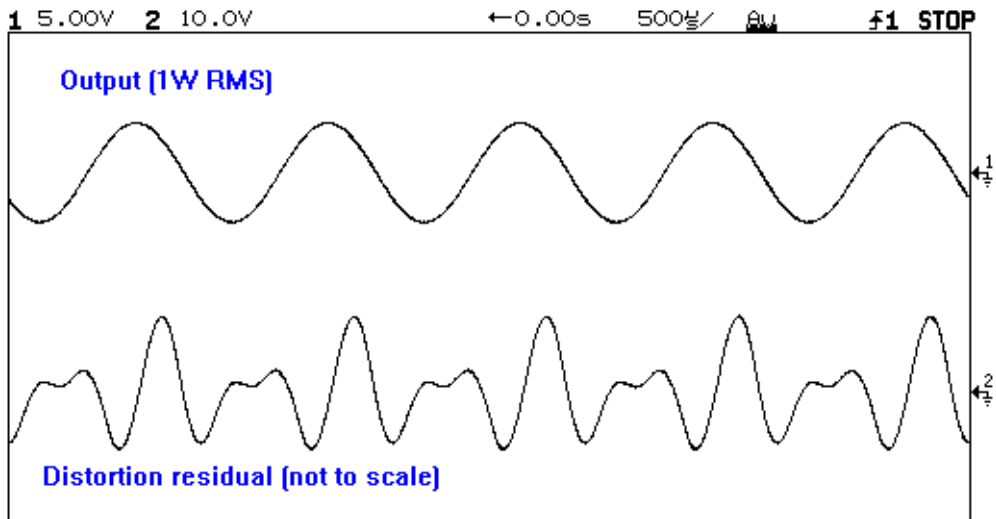
Square wave response, 1W 1kHz into 8 ohms

Figure 5 – FFT spectrum analysis (1kHz, 1 watt into 8 ohms)



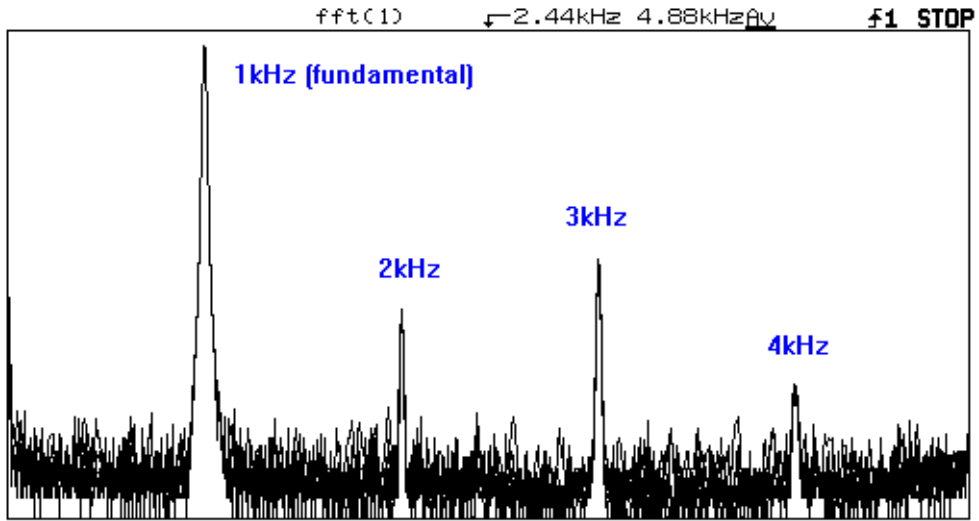
FFT - 1W 1kHz 8 ohms

Figure 6 – Distortion residual (1kHz, 1 watt into 8 ohms)



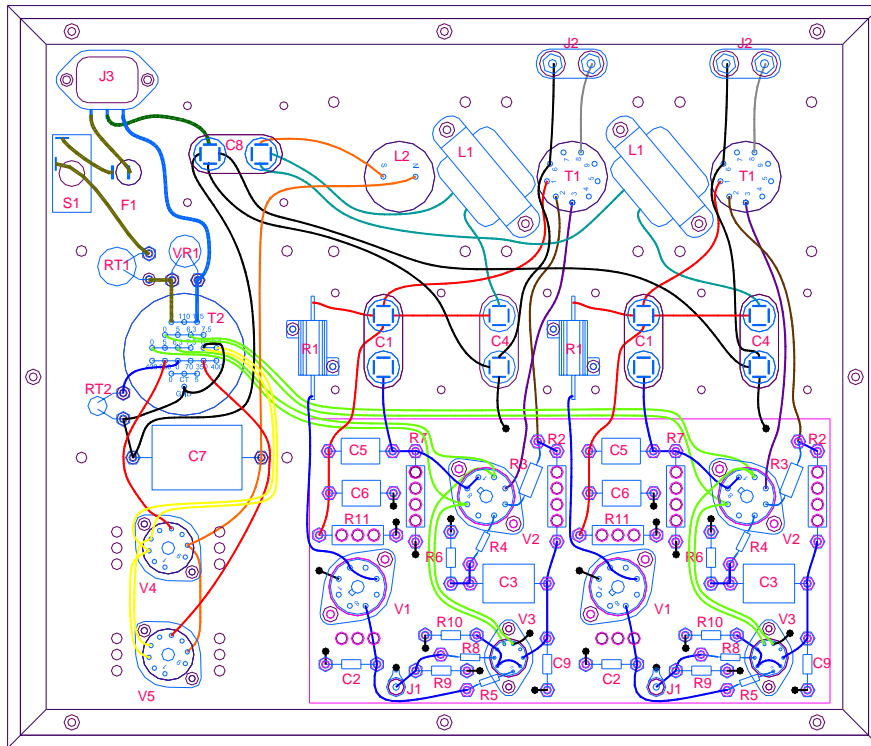
Distortion residual, 1W 1kHz 8 ohms

Figure 7 – FFT spectrum analysis (1kHz, 10 watts into 8 ohms)

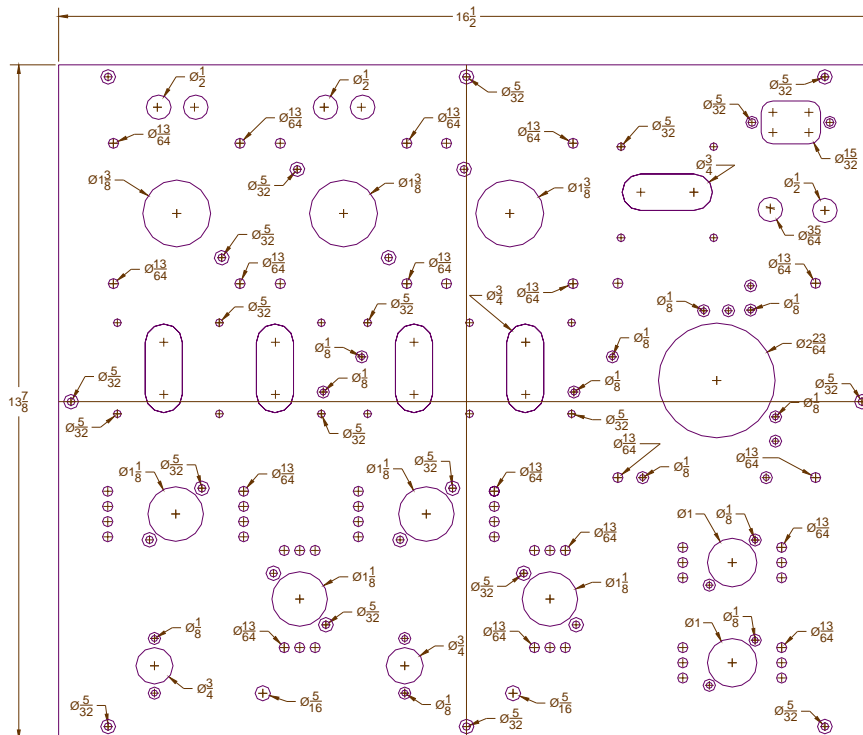


FFT - 10W 1kHz 8 ohms

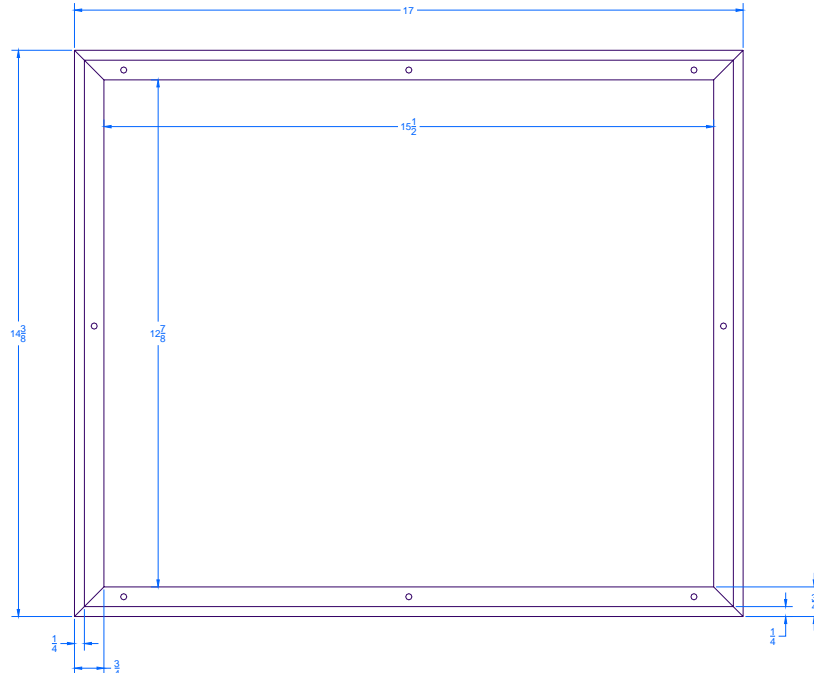
Drawing 1 –Inside assembly



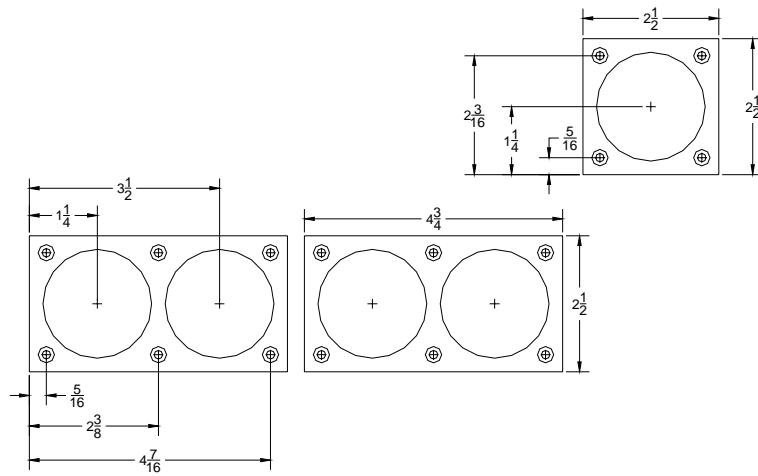
Drawing 2 –Chassis plate



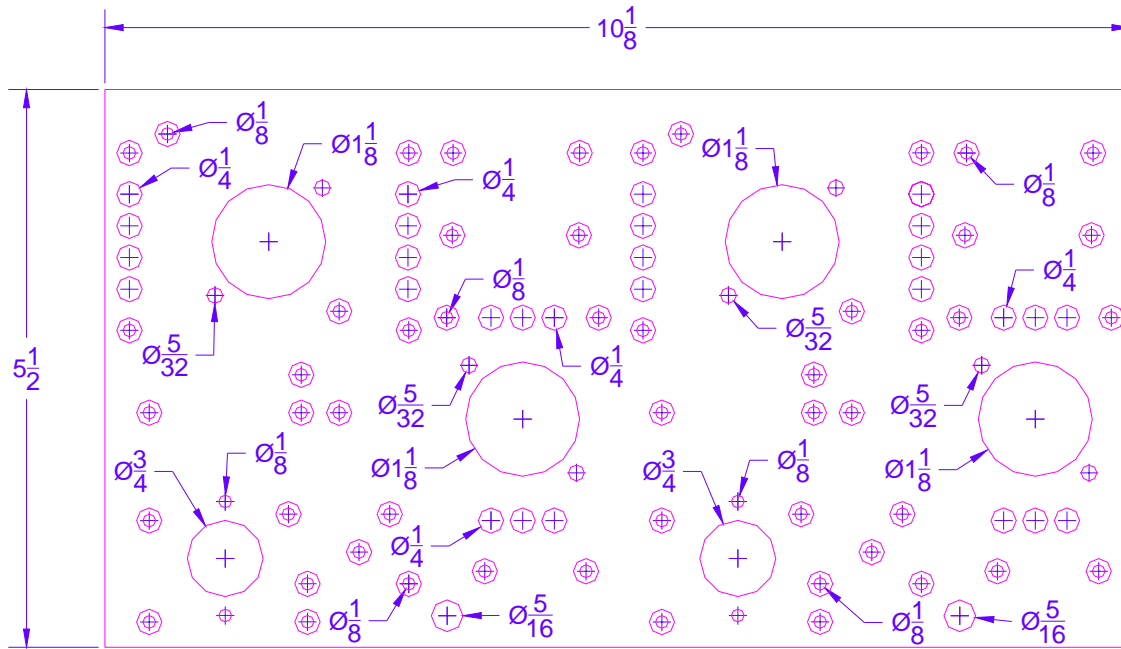
*Drawing 3 –Wood base*



*Drawing 4 –Capacitor clamps*



Drawing 5 –Terminal board dimensions



Drawing 6 –Terminal board parts placement

